

# DETRICK CHAIN WALL

The Detrick Chain Wall has many advantages:

## MINIMUM DOWNTIME:

Deteriorated walls will not collapse because of the unique chain link suspension. Most repairs can be postponed to avoid interference with production.

## LOWER MAINTENANCE COSTS:

Only the portion of the wall requiring repairs need be replaced. Easy replacement of tile makes it possible to maintain critical areas.

## SIMPLE CONSTRUCTION:

Only one basic shape that slides easily into position.

## NO SPAN LIMITATION:

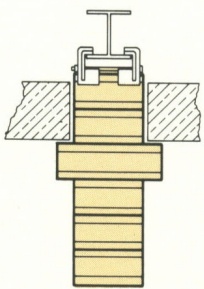
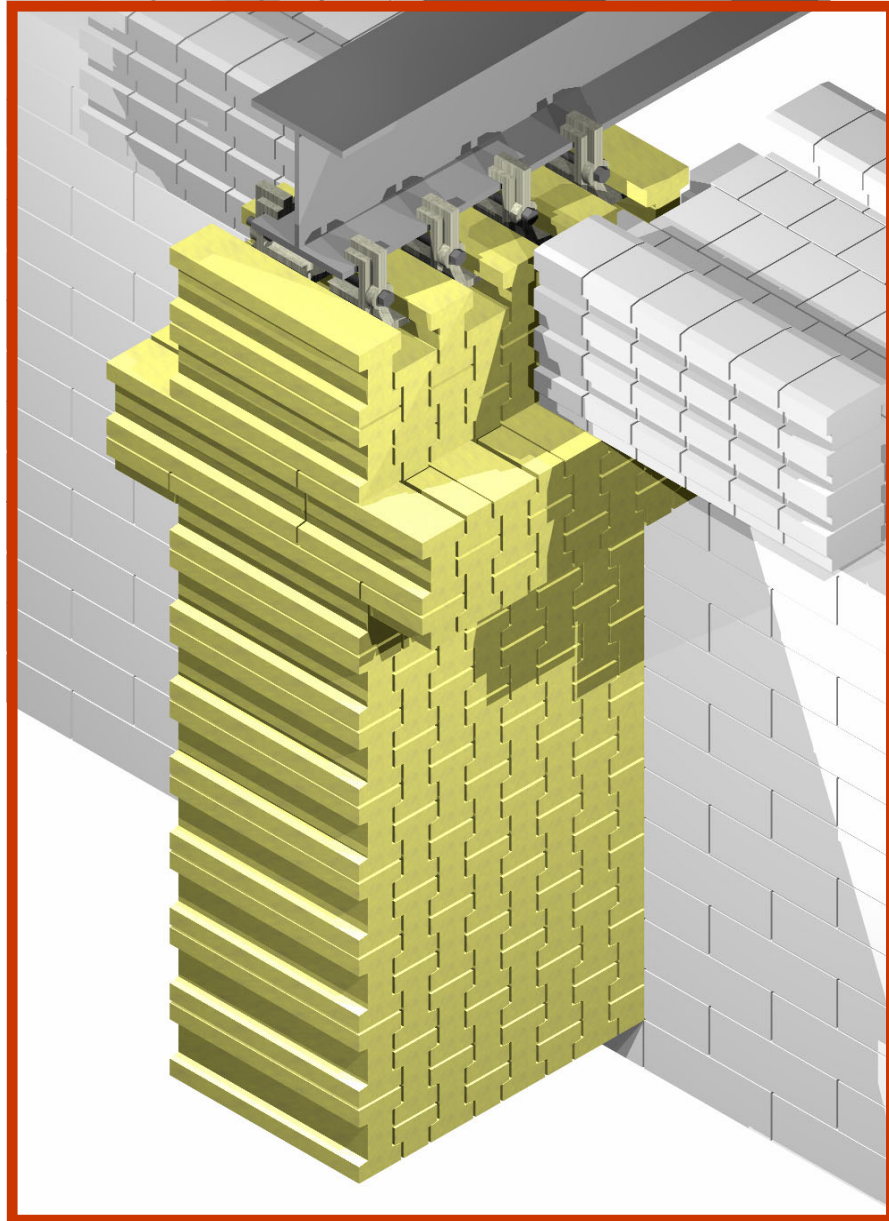
The Chain Wall span is limited only by the capabilities of the supporting steel.

## ADJUSTABLE:

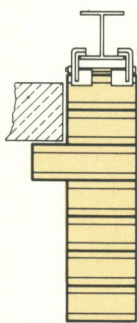
If required, the main support member can be installed on jacks to provide a means to vary the elevation of the Chain Wall as furnace conditions change.

The adaptability of the Detrick Chain Wall Construction is evident by its use for a wide range of industrial heat enclosures over past years. This is due primarily to its simple construction, ease of maintenance, virtually no span limitations, and lower operating and maintenance costs compared to previous refractory constructions.

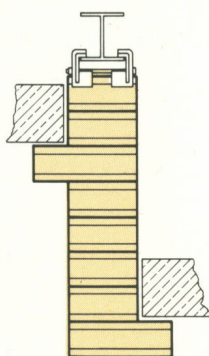
The Detrick Chain Wall Construction has been used successfully in all types of heat enclosures and is applicable to many other problem areas not practical with conventional construction.



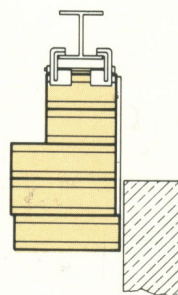
BAFFLE WALL



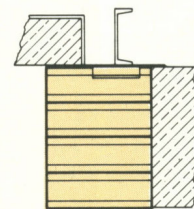
HANGING  
END WALL



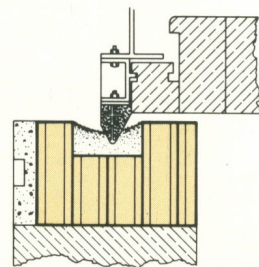
STEPPED ROOF



DOOR LINTEL



DOOR JAMB



SOAKING PIT  
WALL COPING



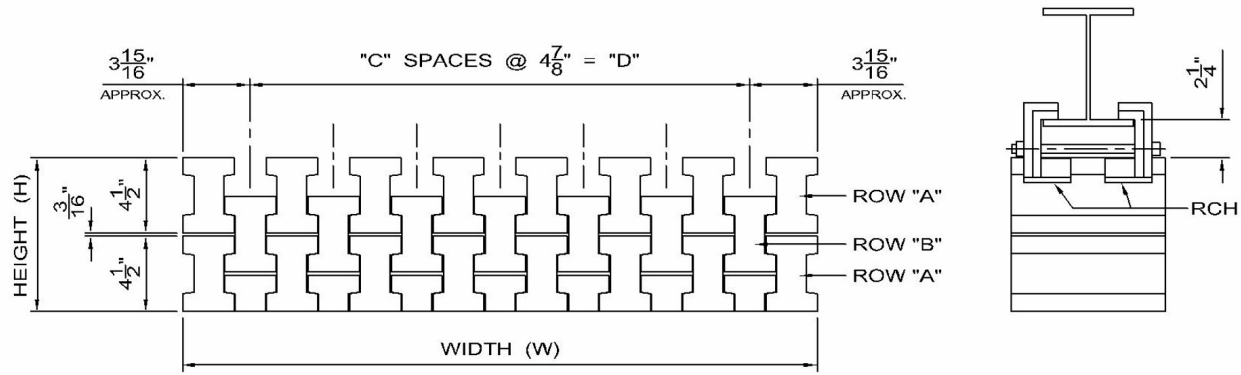
# M.H. DETRICK CO.

ENGINEERED HEAT ENCLOSURES FOR INDUSTRY

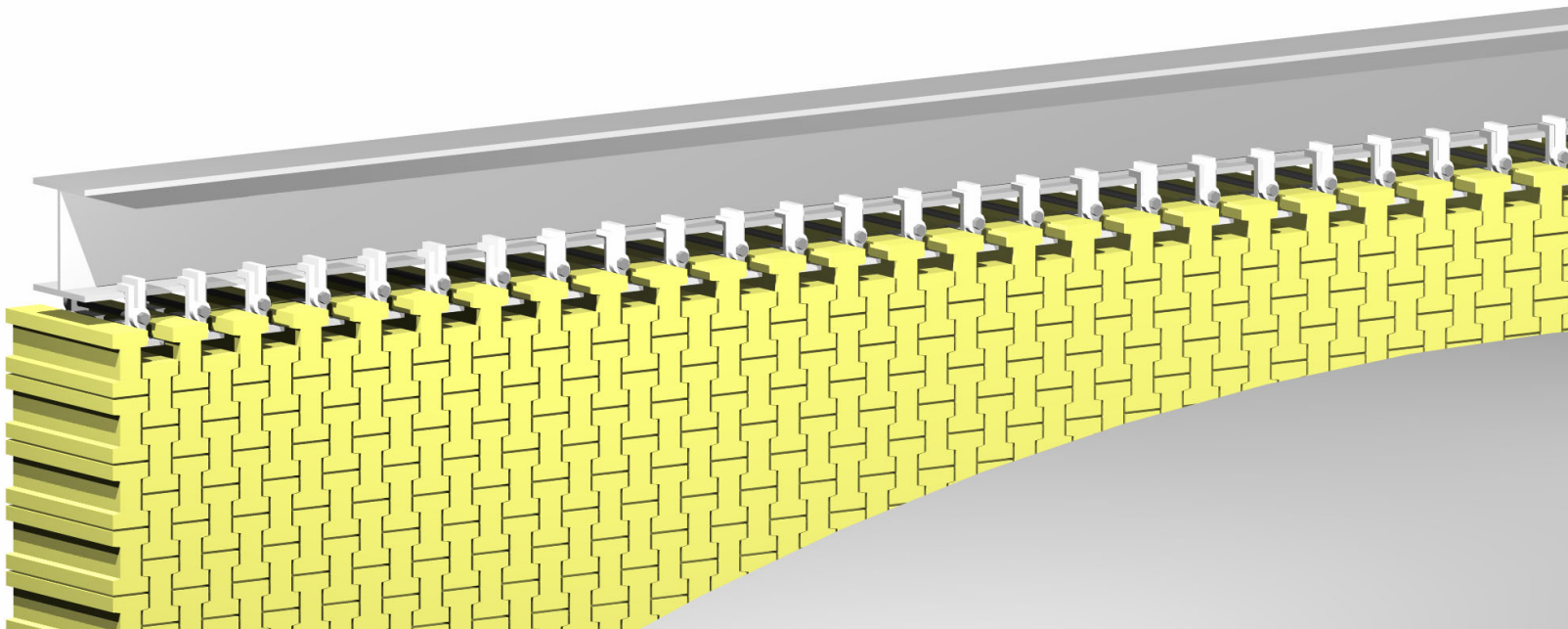
9400 BORMET RD. - SUITE 10 - MOKENA, ILLINOIS 60448 - U.S.A.

Phone: (708)479-5085 - Fax: (708)479-1030

# THEORETICAL DIMENSIONS



HORIZONTAL						VERTICAL		HORIZONTAL						VERTICAL	
A	B	Total Width (W)	C	D	No. Tile	Total Height (H)		A	B	Total Width (W)	C	D	No. Tile	Total Height (H)	
2	1	7 7/8"	0	0	1	4 1/2"		14	13	5'-6 3/8"	12	4'-10 1/2"	7	2'-8 5/8"	
3	2	1'-0 3/4"	1	4 7/8"	1 1/2	6 15/16"		15	14	5'-11 1/4"	13	5'-3 3/8"	7 1/2	2'-11 1/16"	
4	3	1'-5 5/8"	2	9 3/4"	2	9 3/16"		16	15	6'-4 1/8"	14	5'-8 1/4"	8	3'-1 5/16"	
5	4	1'-10 1/2"	3	1'-2 5/8"	2 1/2	11 5/8"		17	16	6'-9"	15	6'-1 1/8"	8 1/2	3'-3 3/4"	
6	5	2'-3 3/8"	4	1'-7 1/2"	3	1'-1 7/8"		18	17	7'-1 1/8"	16	6'-6"	9	3'-6"	
7	6	2'-8 1/4"	5	2'-0 3/8"	3 1/2	1'-4 5/16"		19	18	7'-6 3/4"	17	6'-10 7/8"	9 1/2	3'-8 7/16"	
8	7	3'-1 1/8"	6	2'-5 1/4"	4	1'-6 9/16"		20	19	7'-11 5/8"	18	7'-3 3/4"	10	3'-10 11/16"	
9	8	3'-6"	7	2'-10 1/8"	4 1/2	1'-9"		21	20	8'-4 1/2"	19	7'-8 5/8"	10 1/2	4'-1 1/8"	
10	9	3'-10 7/8"	8	3'-3"	5	1'-11 1/4"		22	21	8'-9 3/8"	20	8'-1 1/2"	11	4'-3 3/8"	
11	10	4'-3 3/4"	9	3'-7 7/8"	5 1/2	2'-1 11/16"		23	22	9'-2 1/4"	21	8'-6 3/8"	11 1/2	4'-5 13/16"	
12	11	4'-8 5/8"	10	4'-0 3/4"	6	2'-3 15/16"		24	23	9'-7 1/8"	22	8'-11 1/4"	12	4'-8 1/16"	
13	12	5'-1 1/2"	11	4'-5 5/8"	6 1/2	2'-6 3/8"		25	24	10'-0"	23	9'-4 1/8"	12 1/2	4'-10 1/2"	



**M.H. DETRICK CO.**

ENGINEERED HEAT ENCLOSURES FOR INDUSTRY

9400 BORMET RD. - SUITE 10 - MOKENA, ILLINOIS 60448 - U.S.A.

Phone: (708)479-5085 - Fax: (708)479-1030